

## Key Notes About Contributing

**Payroll deduction is an easy way to give!** Payroll deductions begin in January following the campaign to fund local agencies that fulfill United Way's program and operating requirements.

**Fair Share Giving means donating one hour's pay per month.**

Your contribution DOES make a difference! As of **June, 2010**, donations to the annual United Way of Lowndes County campaign have helped support

- **14,969** miles traveled by **Dial a Bus**, including **2890** trips for medical purposes. Additional trips that help elderly and disabled residents maintain their independence include transportation to work and personal shopping for food and other necessities.
- The delivery of **3,780** nutritious meals by **Home Delivered Meals** volunteers to home-bound residents, including the elderly, disabled, and recently discharged hospital patients.
- Food assistance provided by **The Salvation Army** to **1,316** individuals, including families with children.
- Adult basic education, literacy instruction, GED preparation, life skills learning, and employment training and testing for **403** youth and adults at **Greater Columbus Learning Center**.
- **40** families who needed rent and mortgage assistance and **75** families who needed utility assistance from **Helping Hands**.
- **Contact Helpline** responses to **3127** crisis calls, including suicide intervention and information and referrals to local services. Daily Reassurance Program calls to elderly residents ensure they are safe and well. As of June, these calls totaled **14,459**.
- Over **2,000** Columbus and Lowndes County children and teens have benefited from programs provided by **Girl Scouts, 4-H Clubs of Columbus and Lowndes County, Boys and Girls Club, YMCA, Boy Scouts** and **Columbus Air Force Base Youth Center**. Service projects, tutoring, life skills and leadership training are among the activities youth participate in throughout the year.

*These are just a few examples of the good work being conducted by United Way funded agencies each day.*

# United Way of Lowndes County

101

or

Answers to  
Frequently Asked Questions  
and Things You Didn't Know!



United Way of Lowndes County  
501 7th Street North  
P. O. Box 266  
Columbus, MS 39703  
Phone: 662.328.0943  
Fax: 662.328.0944  
Web: [www.unitedwaylowndescounty.org](http://www.unitedwaylowndescounty.org)



## Answers to Frequently Asked Questions

**How many agencies are funded by United Way of Lowndes County?** United Way funds more than 18 local agencies, programs and services.

**Who determines the amount each agency receives?** Local volunteers from a variety of backgrounds including business, industry, education, finance, military, and retirees convene each year to tour agencies and review their budgets, services, and requests for funding. These volunteers collaborate with the United Way Board of Directors to determine how your contribution can make the greatest impact.

**Who makes the major decisions regarding how the United Way of Lowndes County operates?** Developing by-laws and organizational policies, financial oversight and other administrative decisions are the responsibility of the local voluntary governing board. United Ways in our surrounding area often work together, and we share some of the same organizations, but each is served by its own independent, volunteer board of directors.

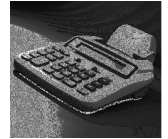
**How much of my donation goes to the national United Way?** Less than 1% of the funds raised in Lowndes County goes to United Way of America. In return, we receive resources and free NFL promotions during football season. United Way of America works with national corporations and helps us help local companies have successful campaigns so that deserving agencies may benefit. Following Hurricane Katrina, United Way of America provided Lowndes County with a \$40,000 grant for disaster relief.

**Does United Way of Lowndes County support abortion?** United Way of Lowndes County does not fund programs that promote or provide abortions.

**I am on a tight budget. How can I afford to give?** Every gift matters! Even a modest gift per pay period can help provide solutions to the most critical needs in our community. By giving through payroll deduction, you can spread your gift over the coming year-making it more manageable than a one-time gift.

## Why United Way is the best choice for your charitable contribution:

Contributing to United Way guarantees our local agencies funds they can rely on and plan for, rather than depending on sporadic support.

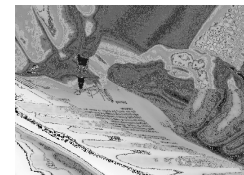


Giving through United Way reduces time-consuming and costly fundraising efforts for the agencies, so their time can be spent helping others.



United Way funds a network of care to ensure agencies are able to work together to meet the needs of individuals and families in our community.

Volunteer oversight assures that United Way agencies adhere to sound fiscal policies and provide quality services that respond to the needs of our community.



United Way funding demonstrates community-wide support for agencies that apply for public and private grants. Combined United Way contributions may be used to leverage matching grants which can double or increase even more your annual contribution.

United Way of Lowndes County has awarded nearly \$150,000 in local relief aid following 3 major weather disasters that struck our community. United Way helped organize agencies and assisted relief efforts by sending volunteers out into the field to conduct assessments, and collect and distribute clothing, school supplies, household items and many other necessities.

